

BMS Desktop Edition

a single-user software package for Windows OS

Memorandum

No. 2018 – 001
January 2018

The Breeding Management System (BMS) Desktop Edition is designed for breeders preferring to use a standalone, single-user application on their local computers. It includes a help widget for users to connect directly with our support channels to get contextual and responsive assistance.

Core functionality

Programme management

The BMS allows for customization of program preferences: favorite locations, breeding methods and crop ontology. Monitor program activities from the central dashboard application. Project data is centralized, secured and easily accessible.

Crop information

The central database works seamlessly across all the inter-connected modules to retrieve and manage data at any step of your breeding process. The BMS provides multiple navigation pathways to retrieve and manage: germplasm inventory, studies, and ontology terms.

Breeding activities

Prepare trials and nurseries, manage seed storage and distribution, and keep continuous genealogy records, from one season to the next. The BMS has tools to help you create field maps and labels with barcodes to ease field data collection and seed inventory management.

Statistical analysis with Breeding View

Analyze field and lab data thanks to powerful statistics and mixed-model comparisons of locations and genotypes. The Breeding View application includes various workflows to analyze multiple phenotypic datasets in one run: single-site; multi-site; and QTL analyses.

Marker-assisted decisions

Explore marker technology and gradually integrate molecular techniques into your germplasm selection and crosses. BMS apps and third-party plugins will let you store and retrieve medium density fingerprinting data, as well as genotyping data for most routine marker analyses, such as MAS, MARS, MABC, and forward breeding via marker-trait association analysis.

Why use an integrated breeding suite?

The BMS aggregates all the tools a breeder needs to conduct their day-to-day operations, making more efficient use of their time to reap the benefits of enhanced data management such as better decision-making. It allows breeder to better process the increasing amount of data produced every crop season, and speed the selection process in a shorter turnaround time between generations.

Different modalities and editions

The BMS Desktop Edition is available in Basic and Pro modalities. The Basic package includes all functions for core breeding activities: prepare trials and nurseries, manage seed inventory, design field maps, print labels and barcodes, etc. The Pro package includes all of this, as well as proprietary components for more advanced statistical analysis.

A commitment to the developing world

The IBP is much more than a software provider. We are firmly committed in democratising and facilitating the adoption of *today's tools for tomorrow's crops* by plant breeders across world regions and economies. To that end, the BMS Desktop Edition was conceived to expose breeders of all backgrounds to the latest technologies for quality data management. The basic package is freely accessible to individual breeders, for them to be able to introduce modern practices into their routine activities, and to provide an effective, open access alternative to commercial software in use at larger or richer organisations. Those with the capacity to pay, or subsidized by public funding, can purchase a licence for Pro functionality, the revenue of which is all reinvested in continued development and maintenance of the product, and in training activities and the distribution of free licences in the developing world. The IBP website complements the technology by providing tutorials, publications, communities of practice, crop knowledge and material, and third party services.



Integrated Breeding Platform
Today's tools for tomorrow's crops

Find us online: www.integratedbreeding.net



@IBPlatform



/IBPlatform



/IBPlatform



/IntegratedBreedingPlatform

Installing the latest version

BMS Desktop can be downloaded from the IBP website, where first-time users will also be able to request a free trial of Pro functionality. Users with connectivity issues can [contact the IBP](#) for instructions on using a torrent sharing or download manager software, or [request a DVD](#) and/or zip file of the installers.

System requirements

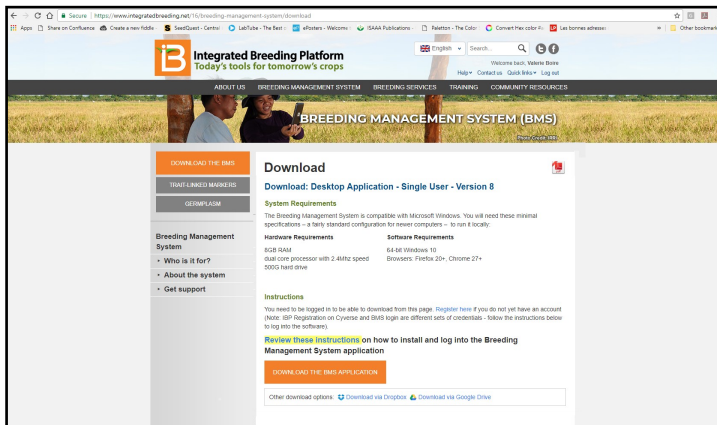
The BMS Desktop Edition is compatible with Microsoft Windows. You will need these minimal specifications – a fairly standard configuration for newer computers – to run it locally:

Hardware	Software
8GB RAM 2.4 Mhz dual core processor 500G hard drive	64-bit Windows 10 Browsers: Firefox 20+, Chrome 27+

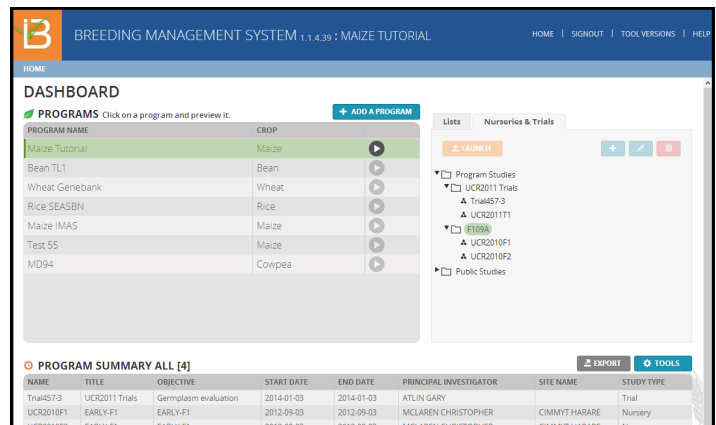
Taking it to the next level

The BMS **Server Edition** (also in Basic or Pro) is available for crop breeding programs looking to deploy a collaborative solution across their institute, or between partner organizations. Installed on a local area network (LAN) or a cloud server, it allows multi-user teams and networks to centralize, standardize, control and exchange data around shared breeding objectives, on the basis of a solid permissions & restrictions scheme.

“Design, randomization, pedigree selection, planning, data capture and analysis... the system has an application to support me at all steps of the plant breeding process.” — Ibrahima Sissoko, Senior Scientific Officer, ICRISAT Mali



Download and stay informed of future improvements on the IBP website



A single-user desktop application to keep track of your personal breeding data

For more information on any of these options and modalities, contact our Deployment team through our [online Help Desk](#), or directly at: deployment@integratedbreeding.net.

Feedback and enquiries:

About the product:
sales@integratedbreeding.net

About tutorials and support material:
learning@integratedbreeding.net

About the IBP and other services:
pr@integratedbreeding.net

Technical support:

www.ibplatform.atlassian.net/servicedesk

Integrated Breeding Platform (IBP)

Plant breeders are at the forefront of the next food revolution, particularly in developing countries. The Integrated Breeding Platform (IBP) provides the tools and knowledge they need to rise to a new level of breeding innovation. It offers a suite of integrated software solutions; breeding services such as genotyping; and breeding materials for a broad range of crops, including germplasm, trait dictionaries and trait-linked markers. The IBP empowers plant breeders through training, dedicated support and community spaces, making it the most comprehensive source for best practices in plant breeding.

Breeding Management System (BMS)

The IBP's Breeding Management System (BMS) is a comprehensive and easy-to-use software suite designed to help breeders conduct their routine activities with more efficiency, so that they may develop improved cultivars faster and at lower cost. It combines information management, data analysis and decision-support tools that accommodate common breeding schemes, from conventional breeding through increasing levels of marker use, providing all the tools they need in just one place. Download the Desktop Edition from the IBP website: www.integratedbreeding.net