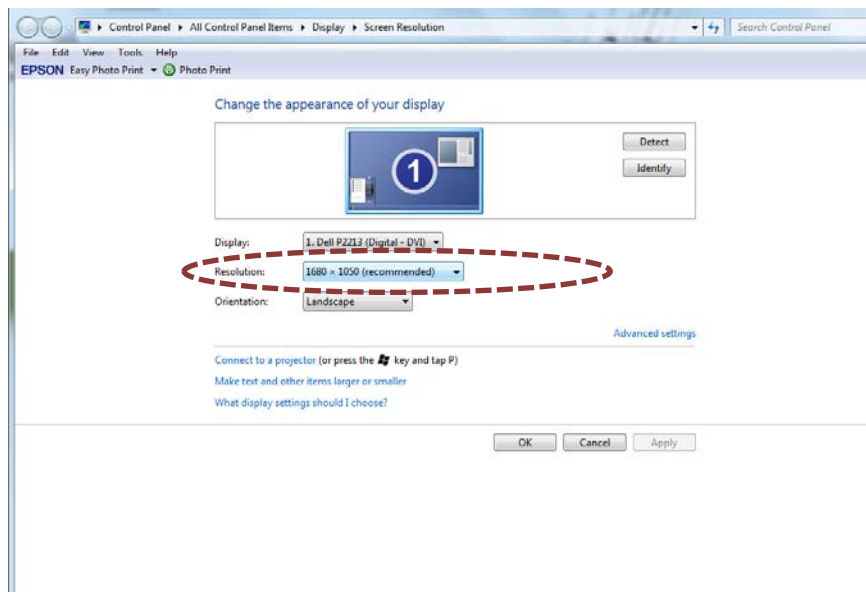


Find your screen resolution

On Windows

The size of the image needs to match the size of the desktop so that the image does not stretch or tile across. Finding this figure (the screen resolution) is easy:

- Right-click on any blank area on your desktop and select *Screen Resolution*. On older Windows versions, select *Properties* from the context menu, and then the *Settings* tab of the *Display Properties* box.
- Note the screen resolution in pixels:



On MAC

Open the **Apple** menu at the very top-left of the screen and click on **About This Mac**. Click on the **More Info** button, which will open up a window with lots of categories of information. The **Graphics/Displays** category will tell you your screen resolution.



Aspect Ratio Chart

Use the chart below to determine what your screen's aspect ratio (standard, wide or HD) is:

Standard Screen Resolutions:

If your screen size is listed below, it has an aspect ratio of 4:3.

- 600 x 800
- 768 x 1024
- 864 x 1152
- 960 x 1280
- 1050 x 1400
- 1080 x 1440
- 1200 x 1600
- 1260 x 1680
- 1440 x 1920
- 1536 x 2048
- 1920 x 2560
- 2100 x 2800
- 2400 x 3200
- 3072 x 4096
- 1024 x 1280
- 2048 x 2560
- 3000 x 3750

Widescreen Resolutions:

If your screen size is listed below, it has an aspect ratio of 16:10

- 960 x 600
- 1152 x 720
- 1280 x 800
- 1440 x 900
- 1680 x 1050
- 1920 x 1200
- 2560 x 1600
- 2880 x 1800
- 3840 x 2400
- 5120 x 3200
- 800 x 480 (this has an aspect ratio of 5:3, you can use the 16:10 size)
- 1280 x 768 (this has an aspect ratio of 5:3, you can use the 16:10 size)

High Definition (HD) Screen Resolutions:

If your screen size is listed below, it has an aspect ratio of 16:9.

- 960 x 540
- 1024 x 576
- 1280 x 720
- 1366 x 768
- 1600 x 900
- 1920 x 1080
- 2048 x 1152
- 2400 x 1350
- 2560 x 1440
- 2880 x 1620
- 3554 x 1999
- 3840 x 2160